

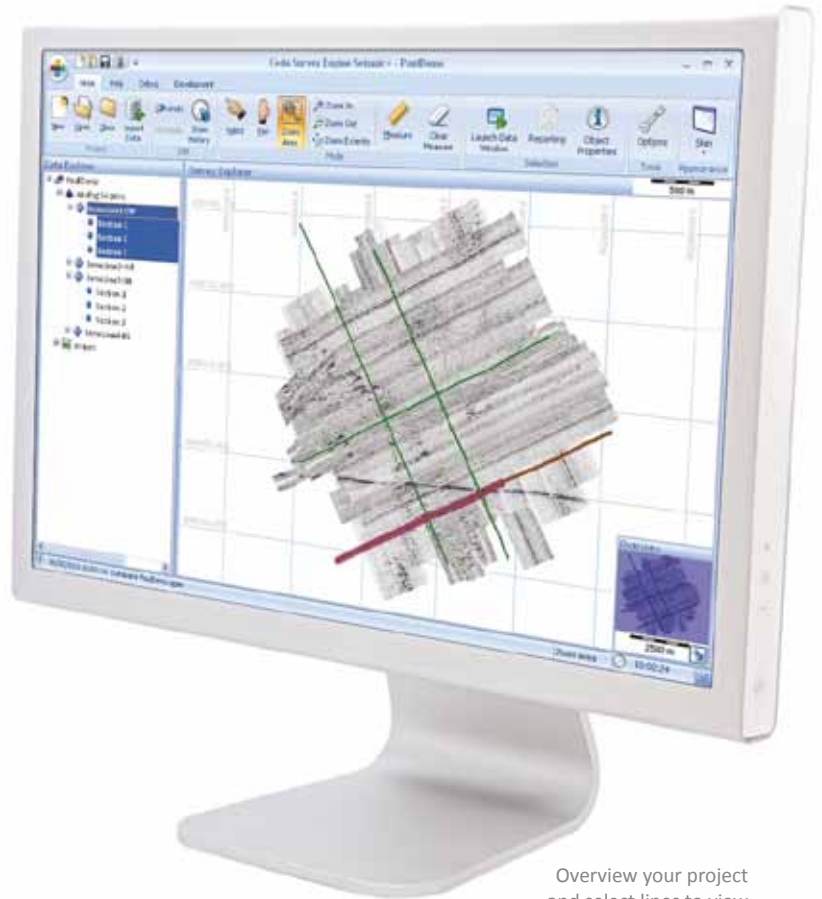
Product Preview

Seismic+

Coda's market-leading GeoSurvey software is at the heart of geophysical survey operations worldwide.

Built on many years of experience and bringing geophysical survey tools up-to-date with the latest database technology, Seismic+ is the first product to be released from the all-new Coda Survey Engine range.

Based around a relational database management system, Coda Survey Engine is a software package that gives extremely fast access to all survey information, even from colossal datasets. As a result Seismic+ offers exceptional time-saving advantages when reviewing data and performing interpretation.



Overview your project and select lines to view

Upgrade to
Seismic+

PROMOTIONAL OFFERS

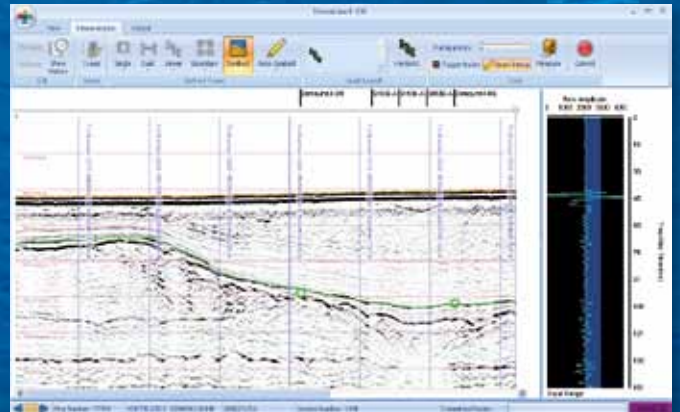
-  Ask about our upgrade offer for current owners of Coda GeoKit Seismic
-  Special discounts for members of CodaOctopus team



Amongst the new features:

- GIS overview window. This shows the track of every line in the database, overlaid onto charts or other relevant survey imagery such as sidescan mosaics, multibeam bathymetry or magnetometer contours.
- Overlay geotechnical information such as CPT or core logs, for display in the GIS overview or in the data viewers.
- Transparency layers to allow direct comparison of adjacent parallel survey lines.
- Display of cross-line intersections to further assist with comparison and QC.
- Enhanced processing functionality in the frequency domain including histograms and a full range of filters.
- Interpretation assistance with automatic horizon tracking, multiple identification and cross-line comparison.
- Generation of Fledermaus objects from either raw or processed data at the click of a button.
- Complete flexibility for reporting to spreadsheet, ASCII, HTML or other formats.
- Powerful tools for searching the interpretation database.
- The widest range of file formats is supported, including Coda, JSF, XTF and various SEG-Y variants.
- Fully compatible with existing software and acquisition systems from CodaOctopus, such as the Coda DA2000 and the Octopus 760 and also with third party products from all leading manufacturers.

Review and interpret seismic data. Quickly scroll through the whole line in detail, or compress the line into a single window to review the whole line. Cross-lines (with interpretation) are marked for easy QC



File Name	File Type	File Number	Settings	Path Name	Check Date Failed	
Processed-Instance	13.75.02005	29.46.25.027506	27421	44.6762.7889	12/04/10 2:00	52.600
Processed-Instance	13.75.02005	29.46.25.041446	27421	44.6762.7889	12/04/10 2:00	100.036
Processed-Instance	13.75.02005	29.47.20.038.888	27501	44.6817.0289	12/04/10 2:00	99.412
Processed-Instance	13.75.02005	29.46.20.038888	27501	44.6817.0289	12/04/10 2:00	17.940
Processed-Instance	13.75.02005	29.46.20.042708	27501	44.6817.0289	12/04/10 2:00	10.211
Processed-Instance	13.75.02005	29.50.30.044.000	27501	45.0206.2770	12/04/10 2:00	24.455
Processed-Instance	13.75.02005	29.51.20.056000	27501	45.0206.2770	12/04/10 2:00	10.040
Processed-Instance	13.75.02005	29.52.20.027100	27501	45.0206.2770	12/04/10 2:00	36.621
Processed-Instance	13.75.02005	29.53.20.027600	27501	45.0206.2770	12/04/10 2:00	28.1036
Processed-Instance	13.75.02005	29.54.20.032200	27501	45.0206.2770	12/04/10 2:00	43.696
Processed-Instance	13.75.02005	29.55.20.038800	27501	45.0206.2770	12/04/10 2:00	47.940
Processed-Instance	13.75.02005	29.57.20.000000	28121	46.1784.1600	12/04/10 2:00	47.400
Processed-Instance	13.75.02005	29.59.20.000000	28241	46.1784.1600	12/04/10 2:00	47.400
Processed-Instance	13.75.02005	29.59.20.000000	28241	46.1784.1600	12/04/10 2:00	46.300
Processed-Instance	13.75.02005	29.59.20.000000	28241	46.1784.1600	12/04/10 2:00	42.000

Extract interpretation easily and quickly in user-definable formats for reporting



Worldwide
 t: +44 131 553 1380
 e: sales@codaoctopus.com
Technical Support t: +44 131 553 7003
24hr Support e: support@codaoctopus.com

Americas
 t: +1 888 340 2627
 e: salesamericas@codaoctopus.com
Technical Support t: +1 888 340 CODA
24hr Support e: support@codaoctopus.com

www.codaoctopus.com

We reserve the right to change equipment specifications without notice.

Issue 1 (03.10)



Enhance your operational performance with round-the-clock technical support, software maintenance and more with membership of CodaOctopus team.



A CodaOctopus GROUP Company

Headquartered in USA

Coda, Coda Survey Engine and Seismic+ are trademarks of CodaOctopus