

4205

TRI-FREQUENCY / MOTION TOLERANT SIDE SCAN SONAR SYSTEM

FEATURES

- Tri frequency side scan sonar
- Motion tolerant mode
- Improved target positioning
- Crisp, high resolution CHIRP images
- Increased towfish power to support a wider range of additional 3rd party sensors
- Single pulse high resolution mode

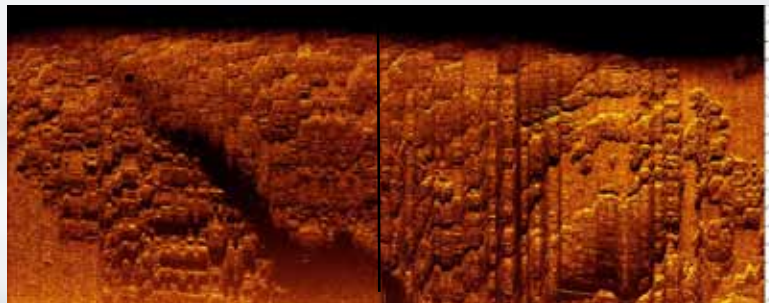
APPLICATIONS

- Cable & pipeline surveys
- Geological/geophysical surveys
- Mine countermeasures (MCM)
- Geohazard surveys
- Channel clearance
- Search and recovery
- Archeological surveys



The next generation 4205 is a versatile side scan sonar system that can be configured for almost any survey application from shallow to deep water operations. The 4205 utilizes EdgeTech's Full Spectrum® CHIRP technology to provide crisp, high resolution imagery at ranges up to 50% greater than non-CHIRP systems; thus allowing customers to cover larger areas and save money spent on costly surveys. In addition to the high-resolution imagery that EdgeTech is known for, the 4205 comes with a number of new features which makes the system even more flexible and powerful in offshore operations. The 4205 is available in either a tri-frequency side scan sonar configuration or motion tolerant and multi-pulse configuration. The tri-frequency version allows surveyors the option to operate any two frequencies simultaneously from the tri-frequency system. Long range operations for example can be achieved with a selection of 230/540kHz combination. Then, on-demand the system can be changed to a 540/850kHz system for an even higher resolution survey. The 4205 motion tolerant configuration with multi-pulse provides surveyors the ability to operate either at faster survey speeds or in more adverse weather conditions while still obtaining high quality underwater imagery. Additionally, this configuration can be operated in a single pulse high-resolution mode for those operations that require an even more finite view of the seafloor.

In both the tri-frequency and motion tolerant/ multi-pulse configurations, towfish and target positioning has been improved with the integration of a more accurate heading sensor that can be coupled with an optional USBL beacon. Additionally, all systems now come with Increased towfish power to support a wider range of additional 3rd party sensors. All EdgeTech 4205 systems are comprised of a topside system and a reliable stainless steel towfish. Topside processors come in a choice of configurations from portable to rack mounted units. In addition, an easy-to-use GUI software is supplied with every unit.



Motion Tolerant Mode Sonar example: During turbulent conditions, the data on the left side of this image was recorded using the EdgeTech 4205 Motion Tolerant mode. The right side of the image, depicting motion induced striping was captured without the Motion Tolerant mode for comparison.

For more information please visit EdgeTech.com

4205

TRI-FREQUENCY / MOTION TOLERANT SIDE SCAN SONAR SYSTEM

KEY SPECIFICATIONS

SONAR SPECIFICATIONS	4205 TRI-FREQUENCY	4205 MULTI-PULSE/MOTION TOLERANT (MP/MT) AND HIGH DEFINITION MODE	
Frequency	Choice of either 120/410/850 kHz or 230/540/850 kHz	Choice of either 120/410 kHz, 230/540 kHz, or 230/850 kHz	
Operating Range (meters/side)	120 kHz: 600m, 230 kHz: 350m, 410 kHz: 200m, 850 kHz: 90m		
		MP/MT	HDM
Horizontal Beam Width	120 kHz: 0.7° 230 kHz: 0.44° 410 kHz: 0.28° 540 kHz: 0.26° 850 kHz: 0.23°	120kHz: 0.95° 230kHz: 0.62° 410kHz: 0.40° 540kHz: 0.36° 850kHz: 0.33°	0.7° 0.44° 0.28° 0.26° 0.23°
		MP/MT	HDM
Resolution Along Track	120 kHz: 2.4m @ 200m 230 kHz: 1.2m @ 150m 410 kHz: 0.5m @ 100m 540 kHz: 0.45m @ 100m 850 kHz: 0.20m @ 50m	120kHz: 3.3m @ 200m 230kHz: 1.7m @ 150m 410kHz: 0.7m @ 100m 540kHz: 0.6m @ 100m 850kHz: 0.26m @ 50m	2.4m @ 200m 1.2m @ 150m 0.5m @ 100m 0.45m @ 100m 0.20m @ 50m
Resolution Across Track	120kHz 8cm; 230kHz 3cm; 410kHz 2 cm; 540kHz 1.5cm; 850kHz 1cm		
Vertical Beam Width	50°		
Depression Angle	Tilted down 25°		
TOWFISH	STAINLESS STEEL		
Diameter	12 cm (4.75 inches)		
Length	140 cm (55 inches)		
Weight in Air	52 kg (115 pounds)		
Depth Rating (Max)	2,000m		
Standard Sensors	Heading, pitch & roll		
Optional Sensor Port	(1) Serial – RS 232C, Bi-directional & 27 VDC		
Options	Pressure Sensor, Magnetometer, Integrated USBL Acoustic Tracking System, Built-in Responder Nose, Depressor, Power Loss Pinger and Custom Sensors		
TOPSIDE PROCESSOR	4205-P	4205 INTERFACE	
Hardware	Portable splash-proof case	19" rack mount interface	
Display & Interface	Splash-proof laptop	Customer-supplied	
Power Input	20-36 VDC or 115/230 VAC	115/230 VAC	
File Format	Native JSF or XTF		
Sensor Interfaces	Ethernet, RS 232, Wifi		
TOW CABLE			
	Coaxial Kevlar or double-armored up to 6,000m, winches available		

For more information please visit EdgeTech.com

info@EdgeTech.com | USA 1.508.291.0057