



Class 4 to Class 6/7 Gearbox Adaptor

Class 6 and 7 valves up to 35,000Nm

Class 7 requires 35,000Nm to achieve this with a stand alone tool requires a very large tool which even with an ROV is not easy to manoeuvre. To overcome this issue the convertor tool is used. The tool contains a class 7 output interface and a receptacle for a class 4 torque tool, in between the two is a multiplication gearbox. The tool provides the required torque but maintains all the control (torque and turns) of a class 4 torque tool.

Applications

Class 6 / 7 valve operations

Features

ISO 13628-8 class 7
Up to 35,000Nm / 25,814 ft lbs
Class 4 torque tool input
Built in compensator
Two different nose lengths supplied

In the box

Norbar torque wrench
Standard length tool
Class 6 nose cone
Class 6 socket
Short nose conversion
Operation and maintenance manual

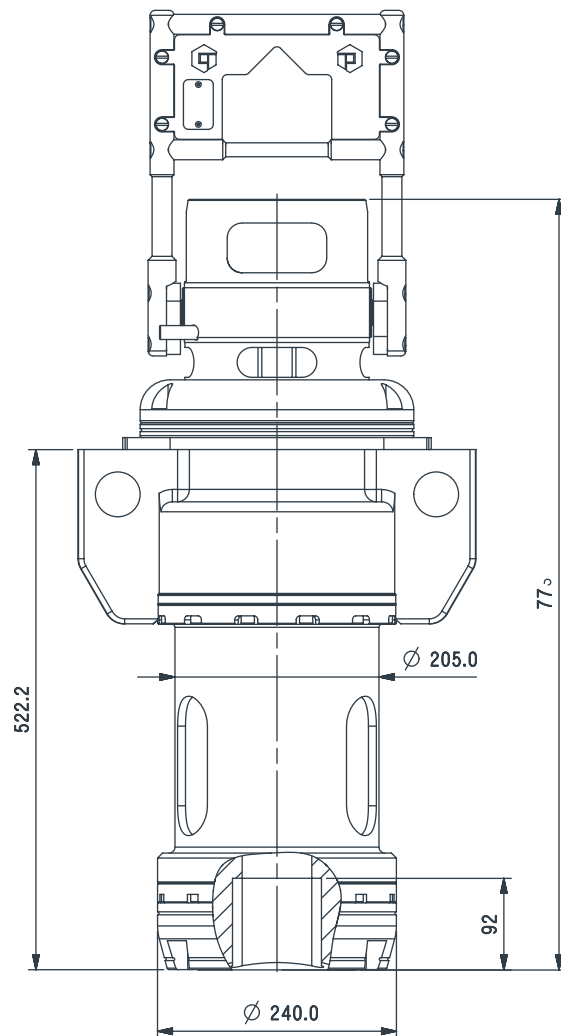
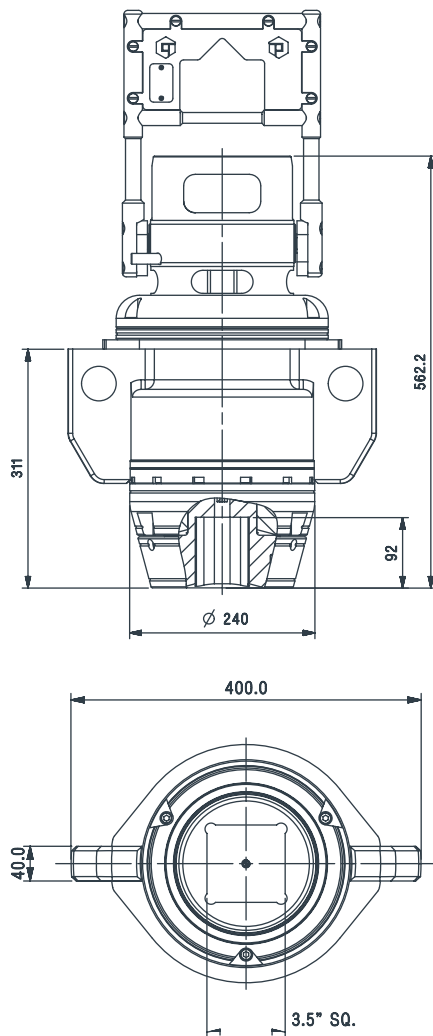


Class 4 to Class 6/7 Gearbox Adaptor

Specifications



Input	API 17D class 4 rotary torque receptacle 2,700Nm / 2000ft lbs maximum with 1 1/2" male square drive
Output	35,000Nm / 25,814ft lbs maximum with female square drive adaptors 3 1/2" (class 7) and 2 5/8" (class 6)
Ratio	12.2:1 mechanical advantage / 14.1:1 velocity ratio
Depth rating	3,000m / 2842ft with integral pressure compensation
Weight - class 7 standard in air	76kg / 167.5lbs
Weight - class 7 standard in water	54kg / 119lbs
Weight - class 7 short in air	60kg / 132.2lbs
Weight - class 7 short in water	54kg / 119lbs
Materials	High strength lightweight materials for manipulation via an ROV



Aberdeen
+44 (0)1224 771888

Abu Dhabi
+971 2 650 7710

Houston
+1 281 398 9533

Singapore
+65 6545 9350