



Multi-fluid Intensifier

10,000psi multi-fluid pump

Multi-fluid Intensifier provides a multi-purpose high pressure intensifier circuit suitable for directly mounting onto a subsea skid or direct to an ROV.

Designed primarily for use with Shell Tellus 22 or 32 grade hydraulic oils, this intensifier can operate using hydraulic oil, glycol or a water/glycol mixture. The Intensifier should be completely flushed when reverting to hydraulic oils.

Applications

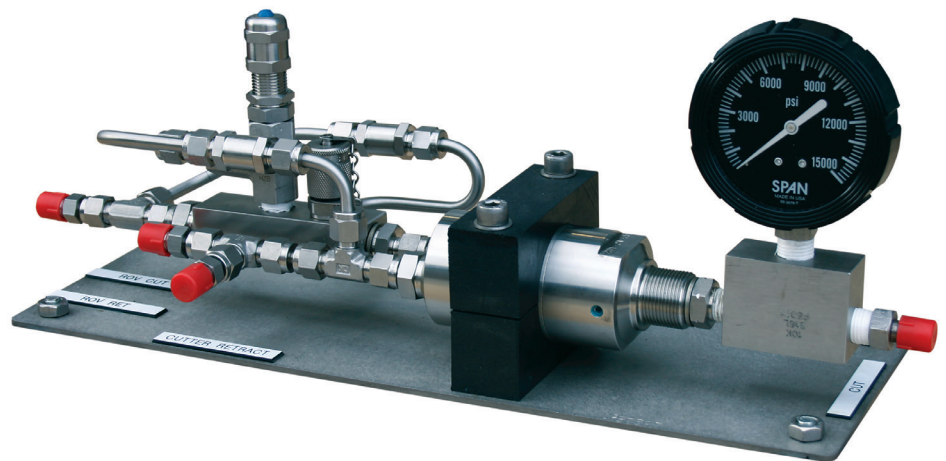
LAOT operations
Cutting operations

Features

Genuine mini-booster intensifier
Achieves pressures up to 690bar /
10,000psi
4:1 ratio as standard
Suitable for oil or glycols
Weighs less than 5kg / 11lbs in air
Mounted on ROV friendly plate

In the box

Multi-fluid Intensifier
Test gauge
Operational hoses
Operations and maintenance manual



Multi-fluid Intensifier

Specifications

Hydraulic input pressure	207bar / 3000psi
Hydraulic input flow	14lpm / 3.6gpm
Hydraulic output pressure	690bar / 10000psi dependant on ratio
Fluids	Oil, glycol and water-glycol mix
Weight in air	4.7kg / 10lbs
Weight in water	3.9kg / 8.5lbs
Dimensions	310 x 135 x 120mm / 12 x 5 x 4.7in

