

Tiger Shark (DIGITAL STILLS CAMERA)

The Tiger Shark stills image subsea camera is a very high quality and user friendly camera controlled by software or hand control. The Tiger Shark subsea camera is perfect for ROV use or as a high resolution stand-alone camera for research purposes. Integrated flash and Ethernet control with downloading capabilities. Timer function can also be added.

The Lantern Shark subsea Flash is made to extend the use of the Tiger Digital Stills camera, and will facilitate high quality images at distances up to 7 - 10 meters. It is connected directly to the Tiger Shark subsea camera's flash connector, and light output is controlled by the camera.

The Lantern Shark is produced in 3 different versions: Aluminium housing for 1,000MSW. Duplex Stainless Steel housing for 3,000MSW and Titanium housing for 6,000MSW.

TIGER TECHNICAL SPECIFICATIONS

Image format	JPEG
Image transfer	Ethernet
Video output	Composite SD
View angle in water diagonally (deg)	49
View angle in water horizontally (deg)	39
Optical zoom	4x
Flash	Internal / External
Housing Options	Duplex or Titanium
Depth Rating (msw)	3,000m or 6,000m
Front port	Acrylic
Standard connector	5506 - 1508 + MCBH4F
Diameter (mm)	83
Length (mm)	170
Weight in water (Kg)	See table
Power	24VDC 10-29W

VERY HIGH OUTPUT



DEPTH RATING DOWN TO 6,000 MSW



INTERNAL FLASH

ETHERNET DOWNLOAD

LANTERN TECHNICAL SPECIFICATIONS

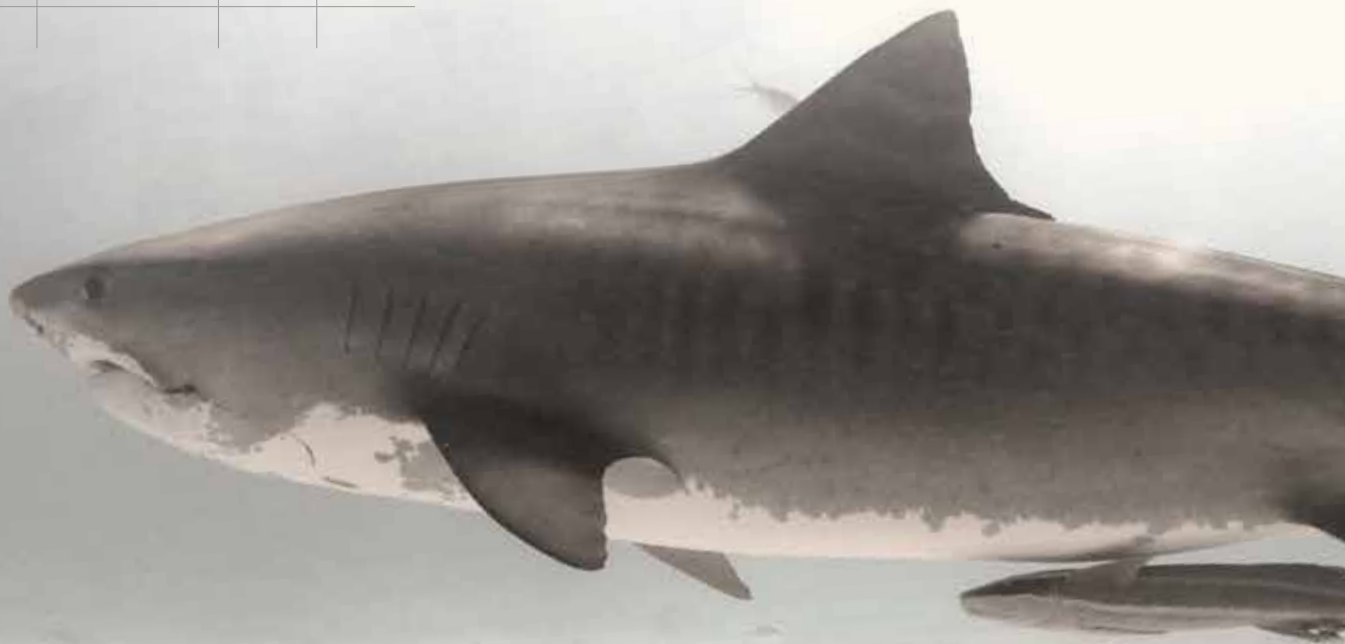
Light output	160W/s
Flash repeat rate	2 sec
Colour temperature (K)	4 800
Housing Options	Duplex or Titanium
Depth Rating (msw)	3,000m or 6,000m
Front port	Acrylic
Standard connector	MCBH4M
Diameter (mm)	100
Length (mm)	175
Weight in water (Kg)	See table
Power	24VDC 25W

FUNCTIONS

- High resolution - 14 MP
- Control and download via ethernet
- Live view video from the camera
- Software controlled
- Timer function available
- Can be used in stand alone system (with battery pack)

TIGER & LANTERN SHARK DEPTH DATA

Material	Depth Rating (msw)	Weight in water (Kg)	
		Tiger	Lantern
Duplex	3,000	1.9	3.0
Titanium	6,000	2.2	2.2



imenco
SMART SOLUTIONS