

Multiple Channel Video Overlay

WINDOWS™-BASED WITH PAL & NTSC SUPPORT



Key hardware features:

- Available with 1, 2, 3 or 4 video channels
- Twin serial and one parallel input
- Optional integral CP isolation amplifier
- Optional multi-channel analogue inputs
- PAL or NTSC composite inputs & outputs

Key software features:

- Graphical representation of serial data
- Libraries of dials, gauges, heading indicators etc
- Displays multiple colour logos
- Built-in support for many survey products
- Time, date, user-text all plotted on-screen
- Sketch tool for highlighting items of interest

The advanced and innovative OceanTools VO4-W and VO1-W Video Overlay systems are based on the industry-standard OceanTools VO4 and VO1 units but now include an advanced Windows™-based user interface. The VO4-W has numerous features including:

- Support for two serial data inputs
- Support for parallel data input
- Support for CP and analogue input

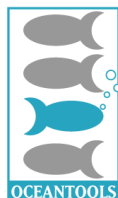
The VO4-W has full colour text & graphics rather than just the "black and white" text found on older units. User-inputs such as heading, depth, pitch, roll, altitude and pressures & temperatures may all be displayed on the overlay in text and graphical formats using the library of built-in "gauges". Along with this data, any survey derived serial data - including GPS inputs - your logo, your clients logo etc. may all be displayed in user-sizeable boxes with variable sized fonts and in thousands of colours. Serial data compatibility with older video overlay systems, including the 'Lann' models.

The VO4-W includes innovative features such as the unique **sketch** tool which allows the operator to highlight targets of interest by marking them with a range of drawing and pointing tools.

OceanTools also offer the VO1-W which is a single channel overlay with reduced functionality but has a lower price. Analogue and CP options are not possible with the VO1-W although all other functions are included.

The VO4-W system is contained in a single 2U high 19" rack mountable enclosure; the VO1-W is in a 1U 19" enclosure. The uncluttered design ensures that all video and data inputs and outputs are taken to the rear panel with the only connectors on the front being those of the mouse and keyboard. The system also includes mouse/pointer support and is supplied with both mouse and keyboard.

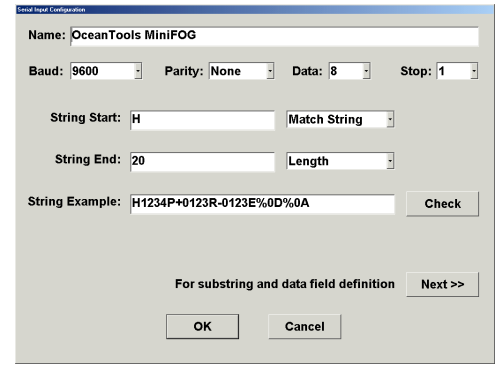
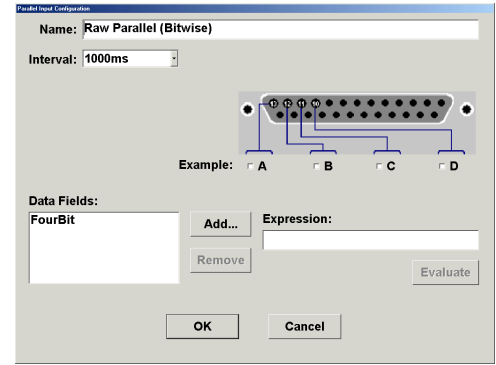
The advanced Windows software at the heart of the VO4-W is also available as a stand-alone software package for use with tooling packages, subsea monitoring systems etc.



OceanTools Ltd.
Unit 11, The Technology Centre
Aberdeen Offshore Technology Park
AB23 8GD.UK.
T. + 44 1224 709606
F. + 44 1224 709616
E. sales@oceantools.ltd.uk
W. www.oceantools.ltd.uk

VO4-W Video Overlay Unit

Number of input channels VO4-W 1, 2, 3 or 4
 Number of input channels VO1-W 1
 Supported formats PAL or NTSC
 Composite Input type 75 Ohm, BNC
 Composite Output type 75 Ohm, BNC
 Enclosure, VO4-W 2U 19" rack mount
 Enclosure, VO1-W 1U 19" rack mount
 Serial data 1xRS232 and 1xRS232 or RS485
 Serial input type 9 way D male
 Analogue input VO4-W 8 channels @ 12 bit
 Fully isolated CP input On VO4-W only
 Analogue input VO1-W Not supported
 User-definable pages 12
 Font sizes Full range from 6pt to 72pt
 Voltage input 110VAC - 240VAC



Description of Available On-screen data types

A simple **text display** can be used to present a single numerical data variable, numerically formatted and aligned as desired.

Data scales present data graphically in a linear form. Options are available to display a single data variable as a bar graph, a needle moving along a scale or a moving scale with a static needle. The range, numbering and tick marks of the scale are user-defined.

Data dials present data graphically in a circular dial. The dial may occupy a full circle or part of a circle, with the range, numbering and tick marks user-defined. A rotating compass display is also available.

Raw data from a serial port can be fed into a Taylor Lann / Liebnitz Lann compatible display object. The number of rows and columns, and various text wrapping properties can be configured by the user.

Static text on screen can be typeset and formatted in a Rich Text Box. These are compatible with RTF format, so existing RTF documents can be loaded in and the contents can be edited.

All displays are individually configurable in terms of font and colour and can be placed anywhere on screen and can be scaled to any size. There are display pages that can be individually named and laid out. Simple keystrokes or menu selections can be used to switch between pages instantly.

Date and/or time can be displayed in a display object similar to the simple text display.

Scaleable graphic boxes are also available. These are compatible with a many popular bitmapped graphic formats, so existing logos and other graphics can be loaded in or pasted from the Windows clipboard.

Sold and supported by: