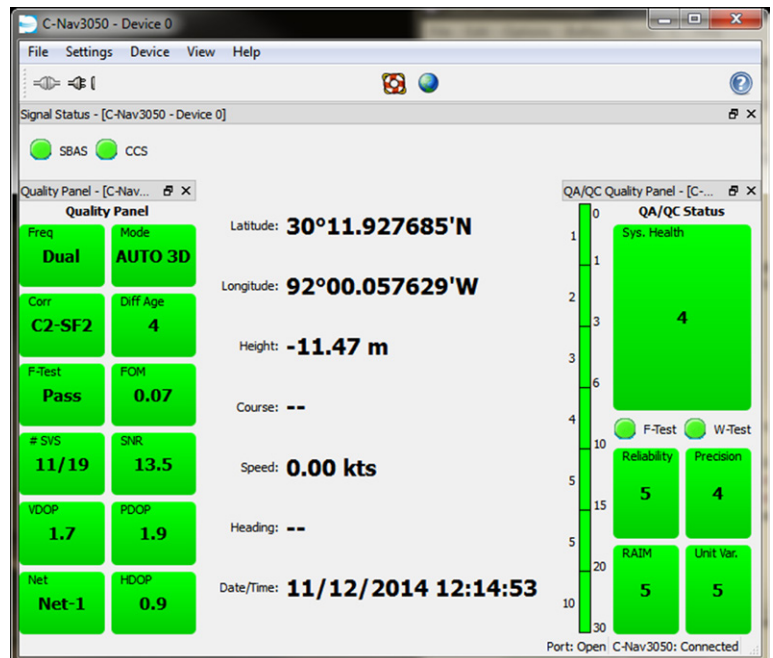


C-Monitor

Oceanering's C-Monitor supports the simultaneous observation and analysis of one or more differential DGNSS systems. Users are able to monitor and evaluate real-time DGNSS QA/QC and precise point positioning (PPP) information.



FEATURES

Full QA/QC utilities, tests, and statistical analysis

User-friendly interface for easy configuration and display of data

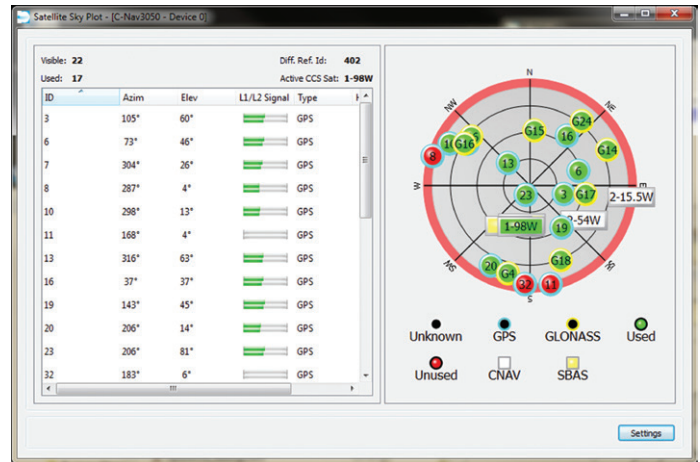
Visible satellite status showing azimuth, elevation, and signal strengths

C-Monitor

Monitor and evaluate real-time DGNSS QA/QC and precise point positioning (PPP) information

Features

- » Fully user-configurable
- » Complies with National Marine Electronics Association (NMEA) requirements
- » Complies to the OGP/IMCA guidelines for GNSS positioning in the oil and gas industry
- » Complies with IMO Receiver Autonomous Integrity Monitoring (RAIM) standards:
 - » Unit variance
 - » F-test
 - » Error ellipse
 - » Rejected SV error details
 - » Marginally Detectable Error (MDE)
- » User configurable alarms and warnings (green, yellow, and red status information)
- » Sky plot of all visible GPS/GLONASS satellites, their location, orientation, and health
- » Variable scale scatter plot monitors GNSS position stability
- » Table of GNSS satellite elevation, azimuth, and signal strength
- » Real-time display of position information from a single or multiple GNSS receivers
- » Time series plots including:
 - » Differential age
 - » HDOP, PDOP, VDOP
 - » Number of satellites in solution
- » RTCM and NMEA data output messages including:
 - » GGA, GLL, GSA, GST, GSV, RMC, VTG, ZDA, HDT
- » Supports all C-Nav DGNSS devices



Satellite Sky Plot

Hardware

Requires Windows 2000, XP, Vista, Windows 7, Windows 8, or Windows 10

Pentium 4 CPU (1.5 GHz or higher) with at least 256 Mb RAM

One or more RS-232 serial interface ports

USB port for sentinel security key (dongle)

Supported GPS Hardware

C-Nav3050[®]*

C-Mariner

C-Nav2050*

C-Nav1010

C-Nav2000

Hemisphere Vector VS330

Basic NMEA devices[^]

* QA/QC data available only with C-Nav2050, and C-Nav3050[®] systems.

[^] Some advanced features not available with some GNSS and NMEA devices.

- For more information: oceanering.com/cnav