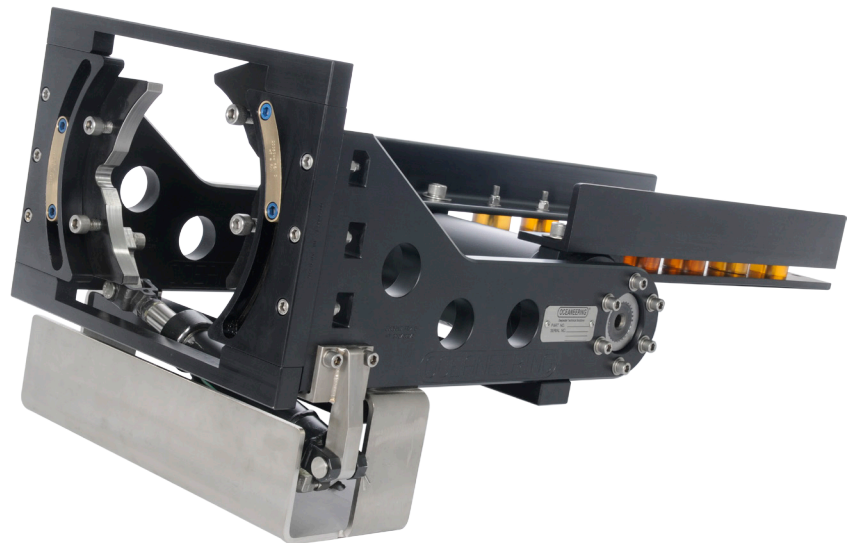


Flying Lead Orientation Tool (FLOT)

The FLOT is designed to orient and guide flying leads into the stab plates on subsea equipment. It also increases efficiency by enabling repositioning of the torque tool in real time without the need for reconfiguration of the torque tool's handle or ROV mounting position.



FEATURES

Designed for use during subsea ROV intervention

Enables repositioning of torque tool in real time

Compatible with hydraulically powered work class ROVs

Flying Lead Orientation Tool (FLOT)

The tool can be operated in horizontal or vertical planes with tool roll controllable from $\pm 10^\circ$ to suit applications where large moments may be experienced. The FLOT features an arm with adjustable length to position the torque tool further away from the ROV.

Pitch and roll actuators are controlled from the host ROV's spare rate valves and are rated for 3,000 psi. The FLOT is capable of withstanding lateral and yaw loads up to 1,000 lb (454 kg).

Specifications

Dimensions (LxWxH)	41 x 18.75 x 17 in
	104 x 47.7 x 43.1 cm
Weight in air/water	165 / 135 lb
	75 / 61 kg

Hydraulic input

Pressure	3,000 psi (max)
Flow	Min 1.5 gpm
Hydraulic fluid type	Tellus 22

Hydraulic connections

4 x 4m R2AT hoses with JIC 4 female swivel ends

Performance data

Pitch	$\pm 90^\circ$
Pitch axis load capacity	550 lb @ 18 in extension from rotary actuator centerline @ 3,000 psi
	380 lb @ 31 1/2 in extension from rotary actuator centerline @ 3,000 psi
Roll	$\pm 10^\circ$
Roll torque	6,000 in-lb @ 2,500 psi

Fittings for mounting FLOT to ROV (typical)

5 x M12 x 50 socket head cap screws
6 x M12 nylon nut
16 x M12 flat washer
4 x M12 x 100 socket head cap screws
1 x M12 x 80 socket head cap screw

Fittings for mounting tool to FLOT (typical)

8 x 1/2 in UNC x 1 in bolt
4 x 1/2 in UNC - 13 x 1 1/2 in socket head cap screws

Transport information

Transport case (LxWxH)	47 x 39.4 x 31.5 in / 120 x 100 x 80 cm
Weight	397 lb / 180 kg