



UCS Circular Chop Saw

Diver or ROV operated circular chop saw

The UCS Mini Circular Chop Saw has been developed to cut tubulars up to 13" in diameter. With a powerful Tungsten Carbide Tipped (TCT) blade, this chop saw cleanly cuts through abrasive coatings as well as steel pipe. Its slim design allows it to be utilised in tight environments.

The system can be supplied with diver-operated control handles or with hot stabs and grab arm for control via ROV. Compact design enables easy installation and operation. This system can be supplied in a number of configurations to suit client project requirements.

Applications

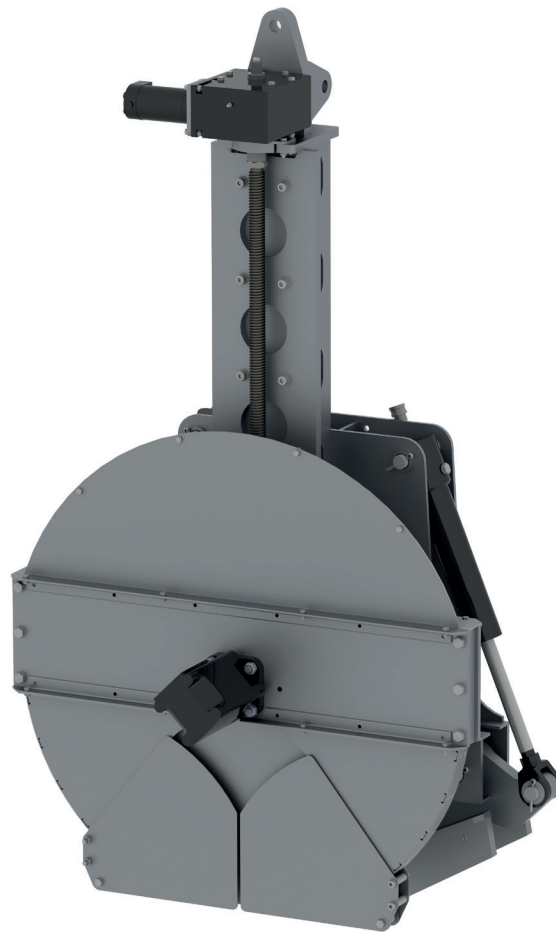
Cutting of horizontal or vertical pipe, casing and structures

Features

- Slim line design
- 4in-13in capacity
- Proven reliability
- Superior performance
- Fast accurate cut
- Diver or ROV Operation
- Heavy-duty tungsten carbide tipped (TCT) chop saw blades
- Solenoid control system for topside control

Bespoke options

UCS have specialist in-house design and fabrication capabilities and are able to modify any tool to suit client / project requirements.



UCS Circular Chop Saw

Specifications

Cutting capacity	330mm / 13in
Hydraulic requirements	40-55lpm @ 210bar / 8.8-12gal @ 3045psi
Hydraulic oil type	ISO VG32 or equivalent
Maximum carriage speed	60mm/min / 2.3in/min
Typical cutting speed	10-40mm/min / 2.3in/min
Mass in air	200kg / 440lbs
Mass in water	150kg / 330lbs
Jaw width open	964mm / 38in
Dimensions	1610mm / 63.4in x 934mm / 36.8in x 590mm / 23.2in

