



UCS Circumferential Chain Manipulator

Diver operated multi-function tool

The standard circumferential chain manipulator (CCM) is ideal for externally cutting all types of round products.

The CCM can be fitted with a number of options including an abrasive waterjet cutting nozzle, track saw blade or a high pressure jetting head for coating removal.

Applications

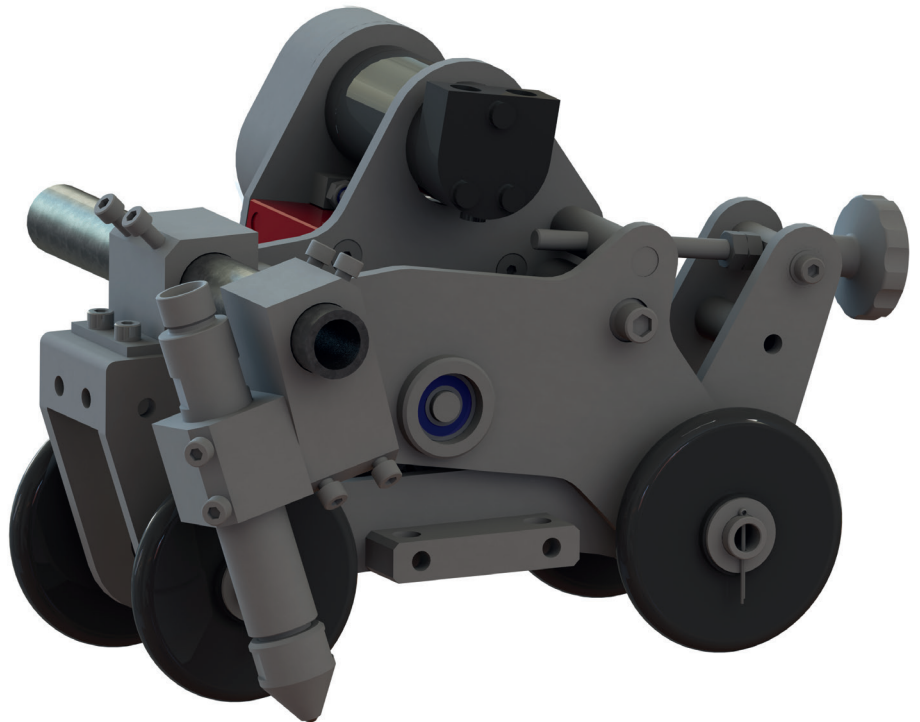
- Compression pipe cutting
- Depth controlled cutting
- Cleaning for surveying / inspection
- Salvage operations

Features

- Abrasive nozzle option
- High pressure cleaning head option
- Track saw option
- Minimal maintenance required
- Adaptive bespoke tooling to suit client requirements
- Operator friendly

Bespoke options

UCS have specialist in-house design and fabrication capabilities and are able to modify any tool to suit client / project requirements.



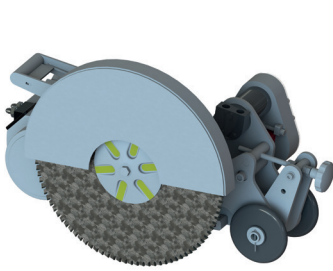
UCS Circumferential Chain Manipulator

Specifications

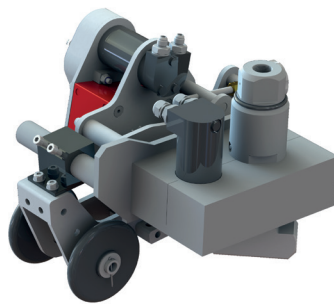


Cutting capacity	Pipe Ø200mm / 8in to unlimited
Hydraulic requirements	22lpm @ 210bar / 5.8gpm @ 3045psi
Hydraulic oil type	ISO VG32 or equivalent
Typical cutting speed	4-100mm/min / 0.16-4in/min
Mass in air	28kg / 61.7lbs
Mass in water	24kg / 52.9lbs
Dimensions	476mm / 18.7 x 266mm / 10.5in x 270mm / 10.6in

Options



Optional UCS Circumferential Track Saw



Optional UCS Circumferential Cleaning Tool

