



ISO 13628-8 Class 5 (API 17D) Surface Surface class 5 torque tool calibration

This unit is used to give pre-dive surface confirmation of the torque tool calibration.

It consists of a standard ISO class 5 torque reaction bucket with sturdy base and built in torque sensor. The unit comes complete with USB cable to connect to the torque tool control system for auto calibration.

Applications

Surface torque tool calibration

Features

ISO 13628-8 fig 18 (API 17D) class 5

Max torque 6750Nm / 5000ft lbs

Hand held digital read out

Output to torque tool control system

In the box

ISO 13628-8 class 5 (API 17D)

Torque tool bucket inc sensor

Handheld display

Transducer to display cable

Display to computer cable

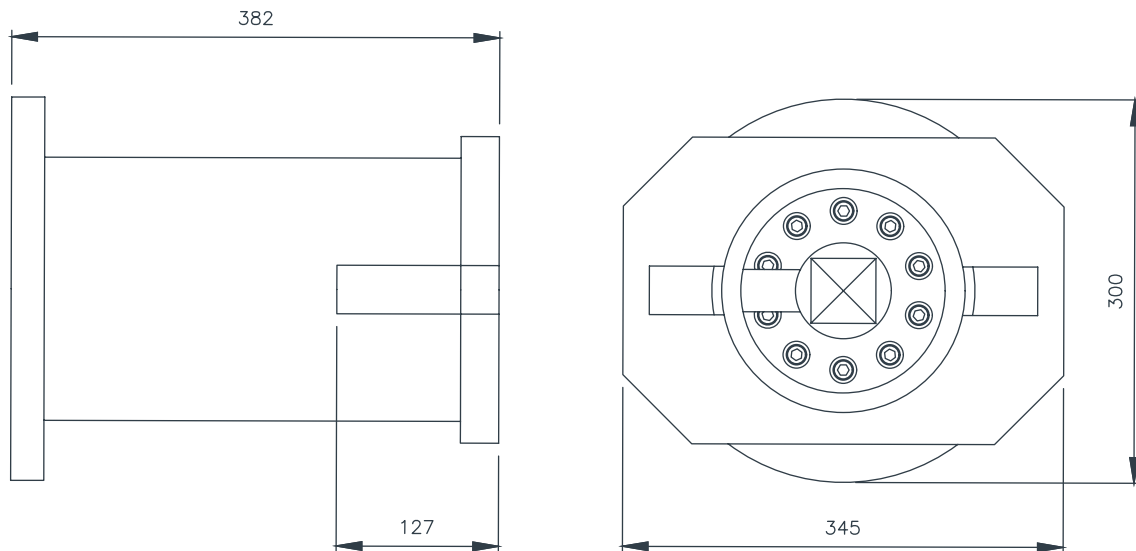
Operations and maintenance manual



ISO 13628-8 Class 5 (API 17D) Surface Specifications



Torque interface	ISO 13628-8 fig 18 class 5
Maximum torque	6750Nm / 5000ft lbs
Handheld unit	Battery powered
Materials	Steel shaft, aluminium housing



Aberdeen
+44 (0)1224 771888

Abu Dhabi
+971 2 650 7710

Houston
+1 281 398 9533

Singapore
+65 6545 9350